

# Meade Virtual Link Software

## Users Guide

English



# Introduction

Meade Virtual Link supports Windows (Vista/XP/2000 only), and provides the following functions:

- **Easy Usage**

Select the USB device from the list displayed on Meade Virtual Link and click **Connect** to use the USB device connected to the device server. Then you can use the USB device as if it is directly connected to a PC. After finishing the USB device use, click **Disconnect** in Meade Virtual Link.

- **Add to Favourites**

You can add and display a frequently used USB device in the Favourites list when there are multiple device servers in the network or when multiple USB devices are connected to the device server.

- **Operating settings for each USB device**

**Start a designated application when connected** or **Meade Virtual Link mode at start up** can be configured for any USB device added to the Favourites group.

- **Compact Mode**

The **Compact Mode** screen minimizes the Favourites list screen and allows you to keep running Meade Virtual Link on the PC desktop without getting in your way.

For help on how to use “**Meade Virtual Link mode at start up**” and “**Compact Mode**” functions, please refer to the on-line manual on the CD-ROM.

Meade Virtual Link is a software package that enables communication between a USB device connected to a WTS unit and a PC. Use this software to connect/disconnect the USB devices connected to the WTS.

- Supported Operating Systems

Windows Vista (32-Bit Edition)

Windows XP (32-Bit Edition)

Windows 2000

- (DE) Auf der CD-ROM befindet sich ein deutschsprachiges Setup-Handbuch im PDF-Format. Zum Anzeigen der PDF-Datei unter Windows benötigen Sie den Acrobat Reader.
- (FR) Un guide d'installation en français au format PDF est inclus dans le CD-ROM. Acrobat Reader est nécessaire pour lire les fichiers PDF dans un environnement Windows.
- (IT) Una Guida alla configurazione in italiano è inclusa nel CD-ROM come file PDF. Per visualizzare il file PDF ambiente Windows è necessario Acrobat Reader.
- (ES) En el CD-ROM se incluye una Guía de instalación en español como archivo PDF. Se necesita Acrobat Reader para ver el archivo PDF en un entorno Windows.
- (PT) Um Guia de Configuração em português é fornecido no CD-ROM no formato de arquivo PDF. É necessário ter o Acrobat Reader para visualizar o arquivo PDF em um ambiente Windows.

## Customer Support



**MEADE®**

Meade Instruments Europe GmbH & Co. KG

Gutenbergstr. 2 · DE-46414 Rhede

[www.meade.de](http://www.meade.de) · [service@meade.de](mailto:service@meade.de)

Tel.: 02872-8074-310

# Step 1: Install Meade Virtual Link

Refer to the procedures below to install Meade Virtual Link on your Windows PC.

1. The Personal Computer will be connected via an ethernet cable or by Wireless LAN to a Router, to an already configured Access Point in your home or observatory. If you have already installed telescope control software (e.g. MEADE Autostar Suite) and suitable camera control software (e.g. MEADE Envisage), including all necessary camera drivers, you can directly start using Meade Virtual Link Software to control all devices being connected to PC via your WTS device.



This section explains the procedures to install the bundled application.

If you are installing the Meade Virtual Link software on a second PC, follow all the steps below.

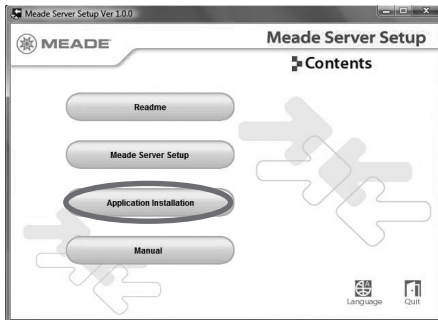
If you have completed the initial hardware configuration and are continuing to install the application, go to section 3.

2. Please insert the Device Server Setup CD into your PC

## <Application Installation>

Go on to 2 in the Windows section.

3. Startup menu is displayed. Click **Application Installation**.

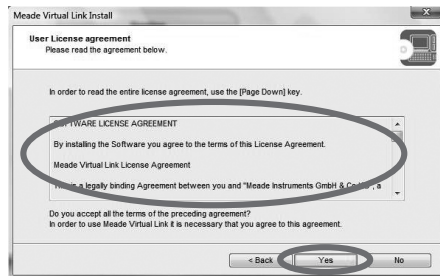


- If the screen does not appear automatically, open My Computer, select the CD-ROM drive and double-click **Autorun.exe**.
- The User Account Control screen is displayed when configuration is performed on Windows Vista. Select **Continue**.

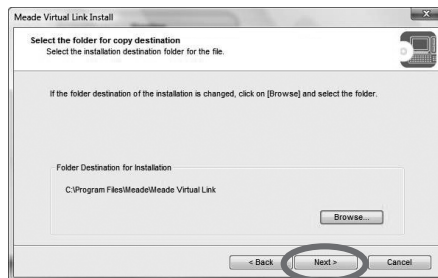
4. The Meade Virtual Link Install screen is displayed. Click **Next**.



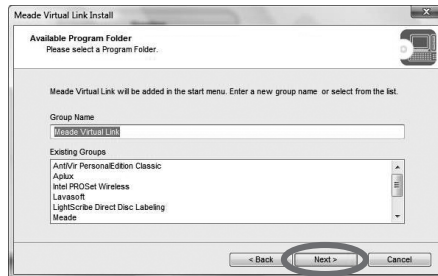
5. Read the SOFTWARE LICENSE AGREEMENT and click **Yes**.



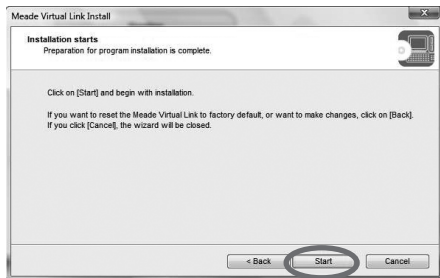
6. You can select the folder you want to install by clicking **Browse**. Click **Next**.



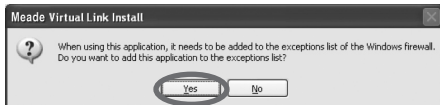
7. Enter a Group Name to be displayed in the Start Menu. Click **Next**.



8. The installation starts. Click **Start**.

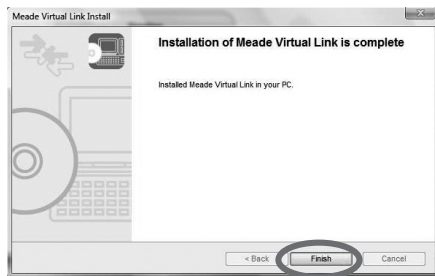


- When in a Windows XP environment (SP2 or higher), the following message will be displayed. Select **Yes**.



- The screen below is displayed when installing the application on a Windows Vista PC.
  - (i) If Windows Security screen is displayed, choose **Install**.
  - (ii) The screen to confirm the user adding the application to the Windows firewall exemption list is displayed. Select **Yes**.

9. The Installation of the Meade Virtual Link is complete. Click **Finish**.



Meade Virtual Link has been installed.  
Refer to „Step 2 Meade Virtual Link basic usage“

## Step 2: Meade Virtual Link basic usage

Step 2 explains how to connect to USB devices using Meade Virtual Link.

### 1. Start Meade Virtual Link

Click **Start - (All) Programs - Meade Virtual Link - Meade Virtual Link**.

### 2. Connect to USB devices

1. Where possible, it is recommended that a USB device, alongwith its associated drivers, is pre-installed in the PC prior to attempting to connect to the device via the Meade Virtual Link software and the WTS unit.

2. Please choose a USB device and connect with the selected USB device. Click Connect. The USB device can be connected when the status icon, " " is displayed.



- If Meade Virtual Link is not installed in your PC, please install from Meade Server Setup CD.
- When using a USB device for the first time, the device driver bundled with the USB device may need to be installed in advance. It is normal for Windows to ask for drivers to be reinstalled when a known USB device is connected via a new USB port. To install the driver, refer to the operation manual for the USB device, or follow the instructions on the screen displayed after clicking Connect in Meade Virtual Link.

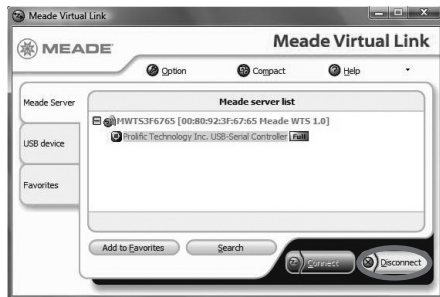
- If a Meade server is not displayed on a list, please click Search.
- If the USB device is not displayed, please click [+].
- Do not disconnect the USB cable or click Disconnect in the Meade Virtual Link while the USB device is being accessed.

2. When you connect Meade DSI cameras in Meade Virtual Link for first time you should see a unit that has only a PID and VID. (see image) During the connection process, the USB information may disappear, looking (briefly) as if no device is connected at all. Then a device named EZ-USB FX2 should appear with the attached device description. Once you are connected to this unit you can use the USB device.



### 3. Disconnect USB devices.

Please click **Disconnect**, if not using USB device. This will make the device available to other users on the Network.





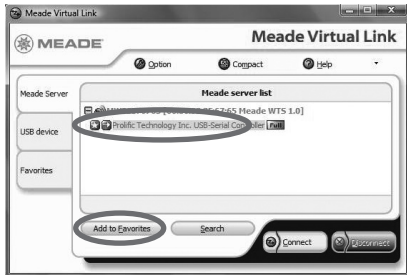
## Step 3: Use convenient functions of Meade Virtual Link (optional)

### Start designated application when connected

Meade Virtual Link can be configured to automatically start any application when the USB device is connected to the Meade server.

By registering software that came with your camera or telescope, the operation will be smooth because the application will start automatically simply by pairing the USB device with Meade Virtual Link.

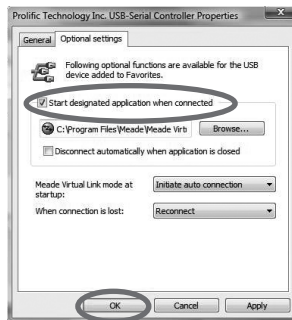
1. Click the USB device you want to configure in the Favorites list and click **Properties**.



2. The Device Properties screen is displayed. Click **Optional settings**.

3. Select **Start designated application when connected**.  
When you click Browse, an **Open** dialogue will be displayed. Select the executable file (.exe) of the application to register and click **Open**.

When configuration is completed, click **OK**.



If Disconnect automatically when application is closed is checked in the device properties dialog box, the network connection will be disconnected automatically when the USB device software is closed.

The automatic start of an application is now enabled. When a USB device registered in Meade Virtual Link is connected, the designated application will start automatically.

# Warranty

The period of warranty is 2 years, beginning on the day of purchase. Please keep the cash receipt as evidence of purchase. Devices which become defective during the warranty period can be returned to the dealer where the device was bought. The repaired device or a new one will then be returned to you. In the case of defects which occur after the end of the warranty period, the devices can also be returned. However, repairs which become necessary after the end of the warranty period will be subject to a service fee.

## **Important:**

Make sure to return the device carefully packed in the original packaging in order to prevent transport damage. Please also enclose the cash receipt (or a copy). This warranty does not imply any restriction of your statutory rights.

Your dealer:

Name: \_\_\_\_\_

Postcode / City: \_\_\_\_\_

Street: \_\_\_\_\_

Telephone: \_\_\_\_\_

Date of purchase: \_\_\_\_\_

Signature: \_\_\_\_\_

## This image shows a single sheet of white paper with horizontal ruling lines. The lines are evenly spaced and run across the width of the page. There are no margins or other markings on the paper.



**MEADE®**

Meade Instruments Europe  
GmbH & Co. KG

Gutenbergstr. 2 · DE-46414 Rhede  
[www.meade.de](http://www.meade.de)